

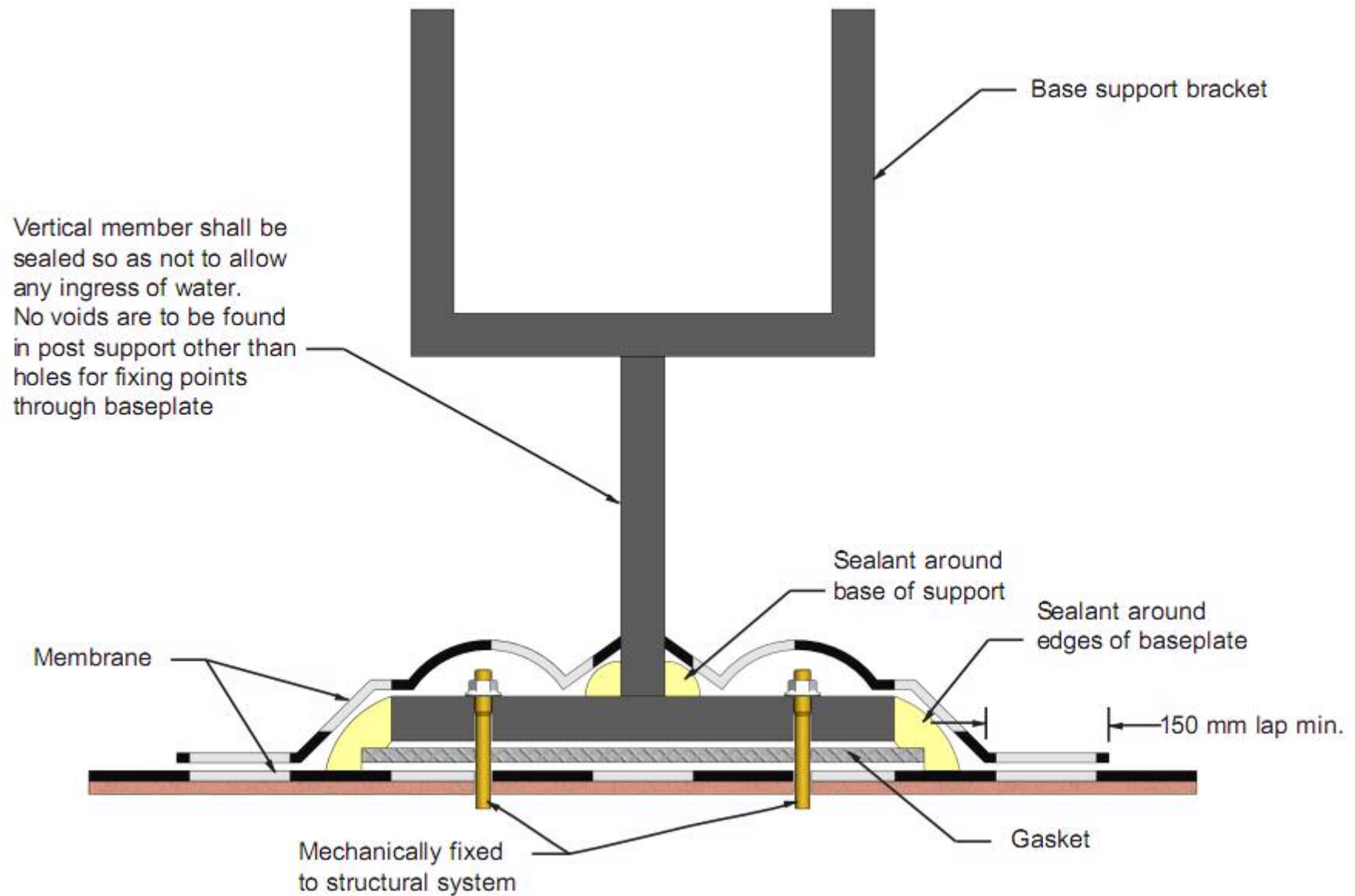


Technical Drawings from AIW

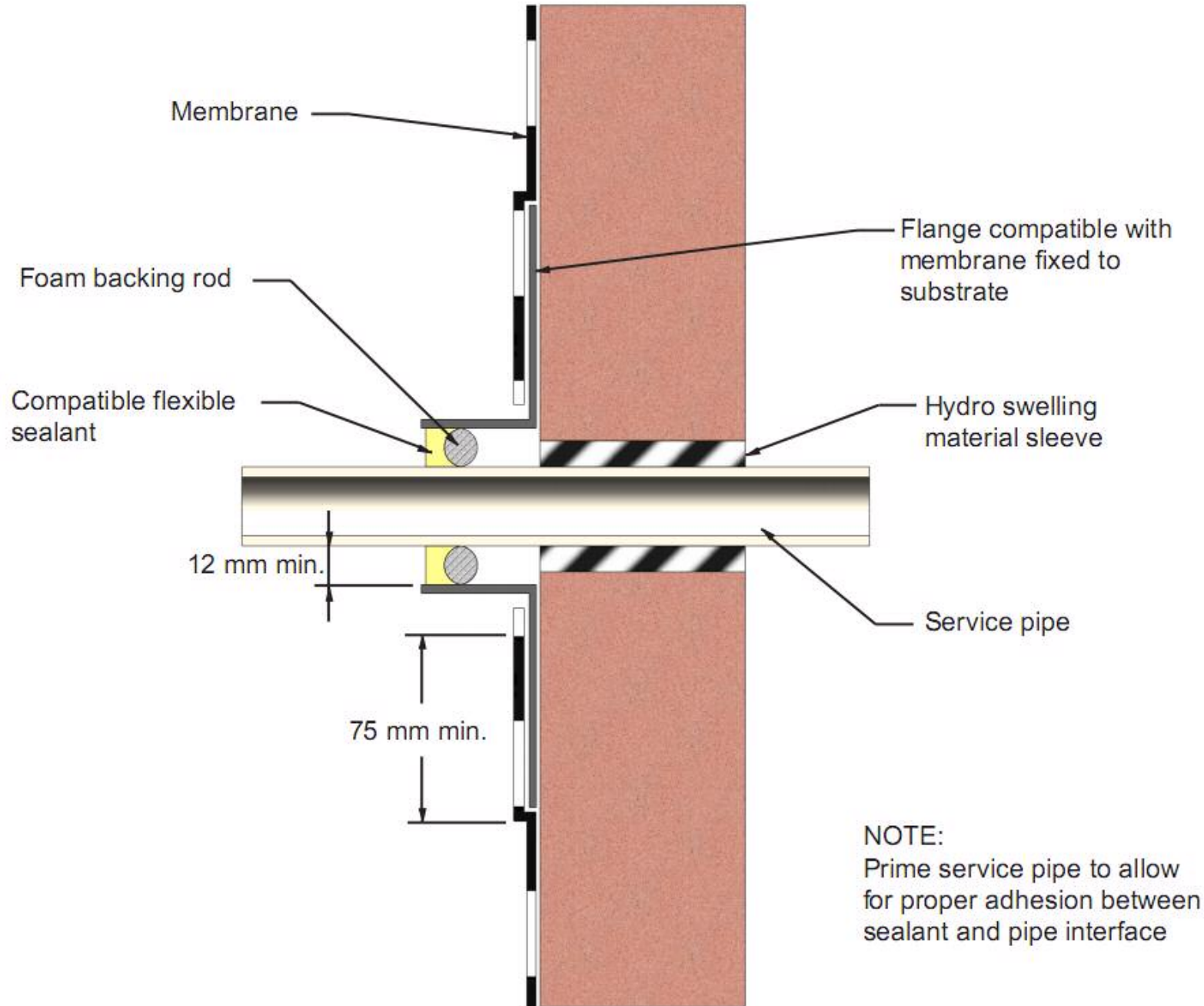
to assist with understanding

**AS4654.2 Waterproofing membranes for
external above-ground use.
Design and installation.**

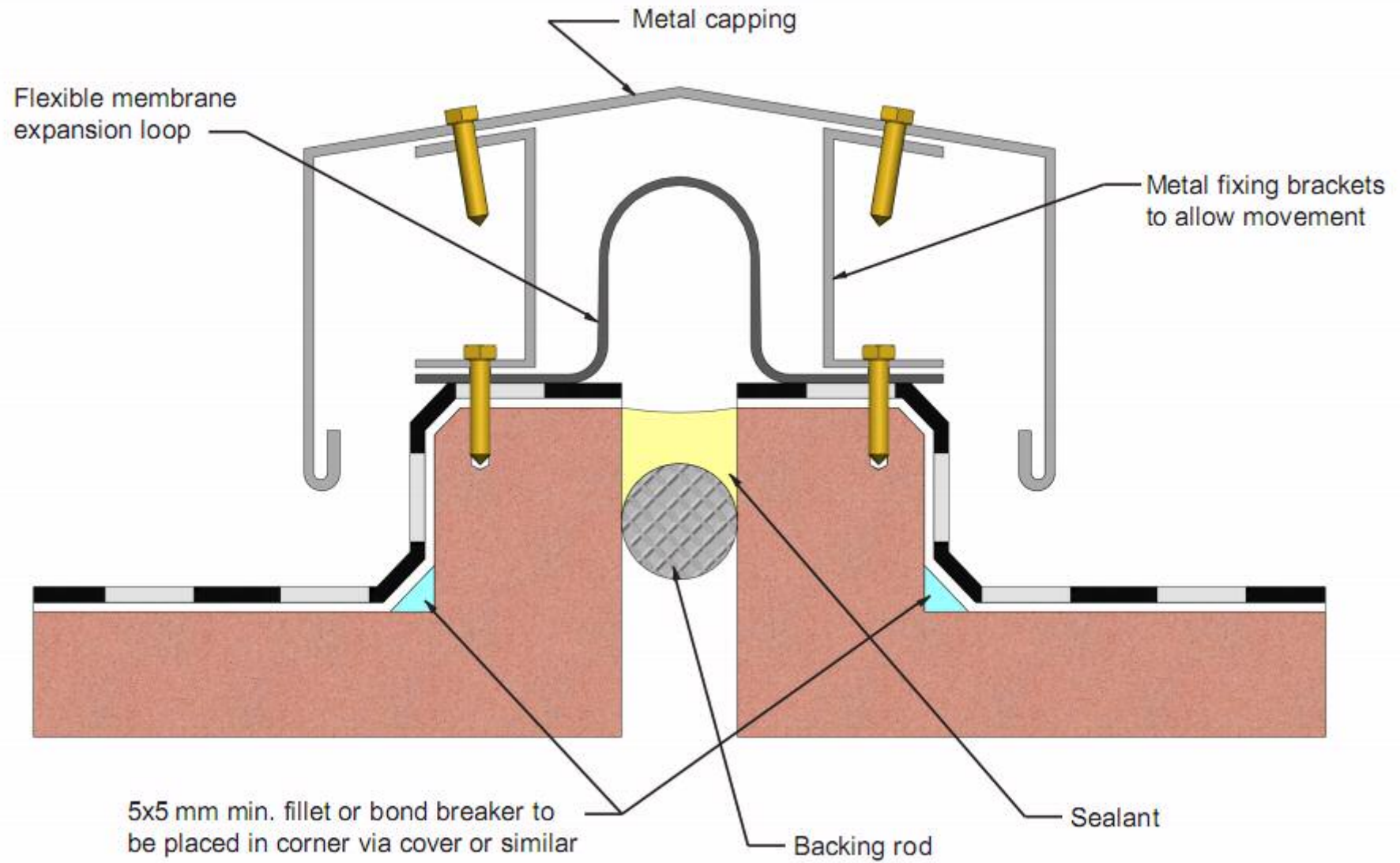
Detail of metal post support



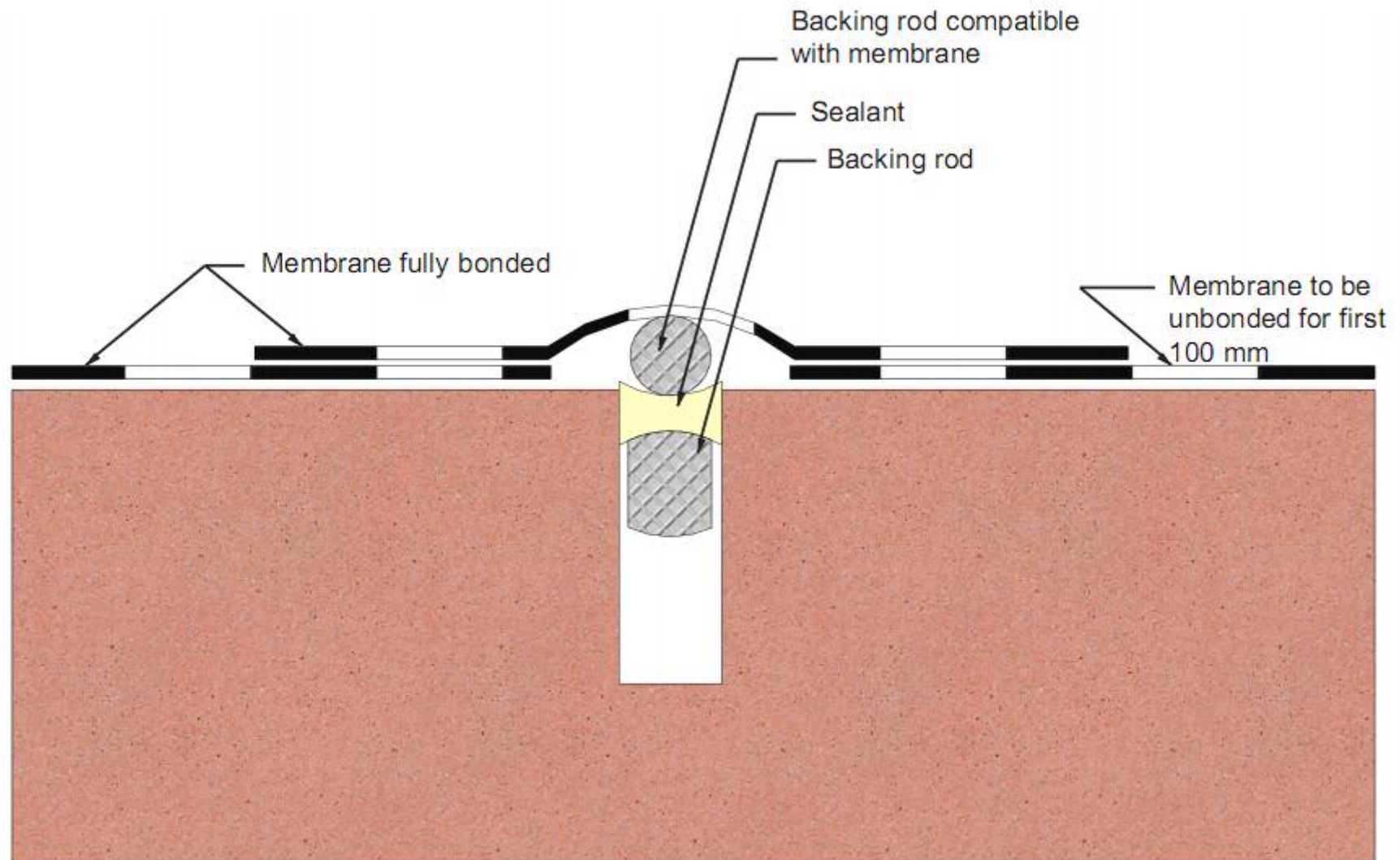
Detail of horizontal membrane penetration



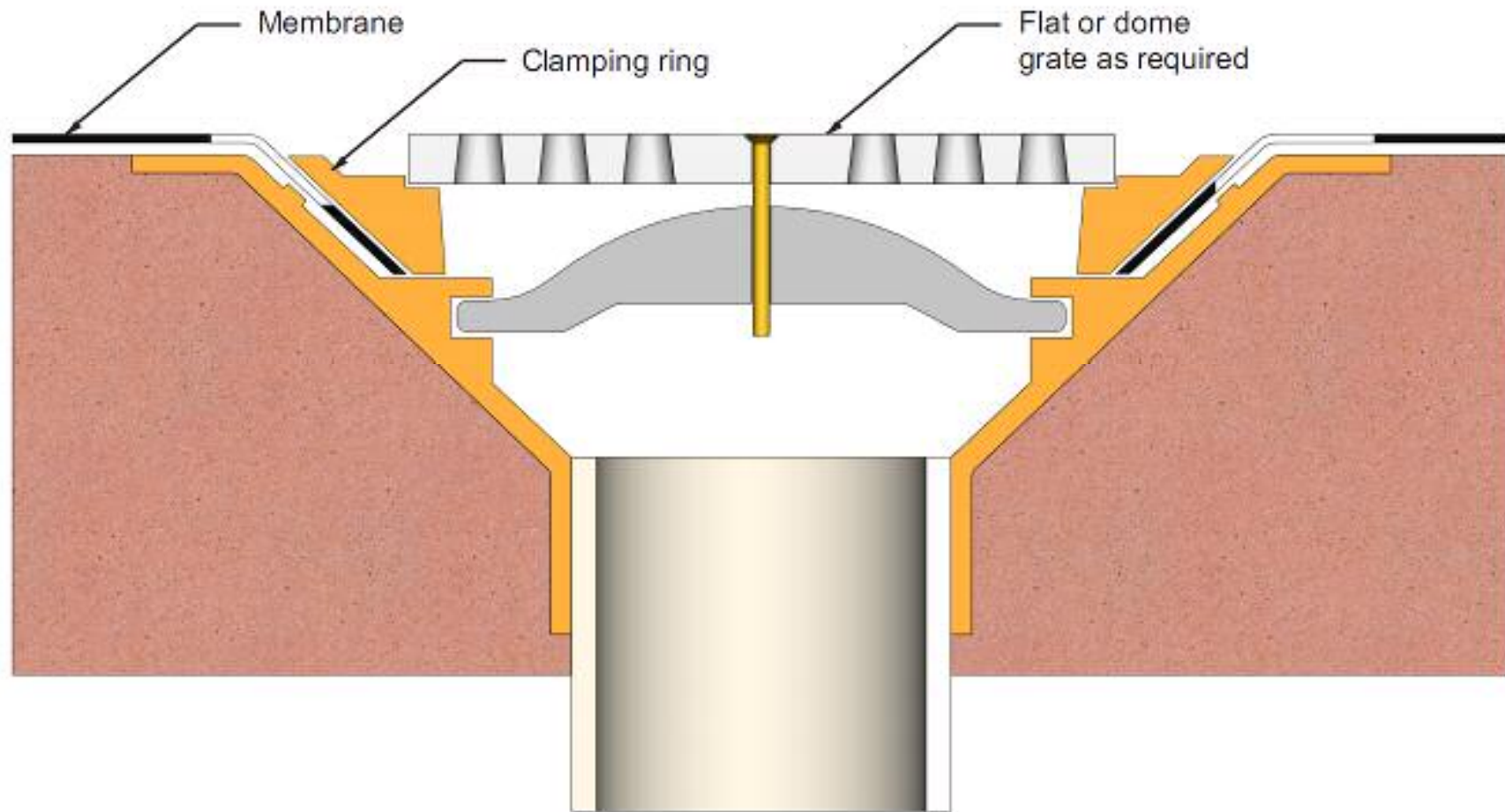
Detail of one way movement joint



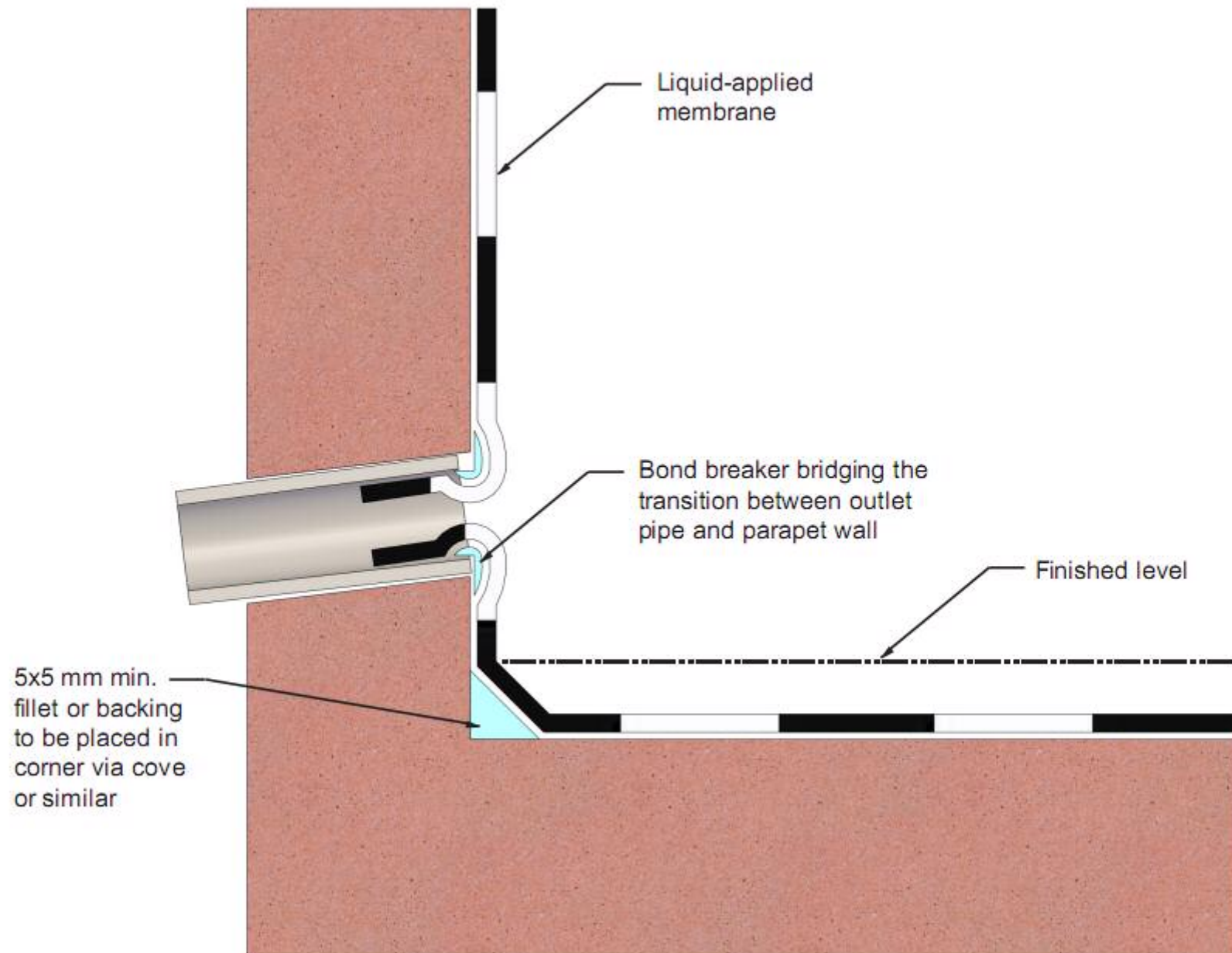
Detail of one way construction joint



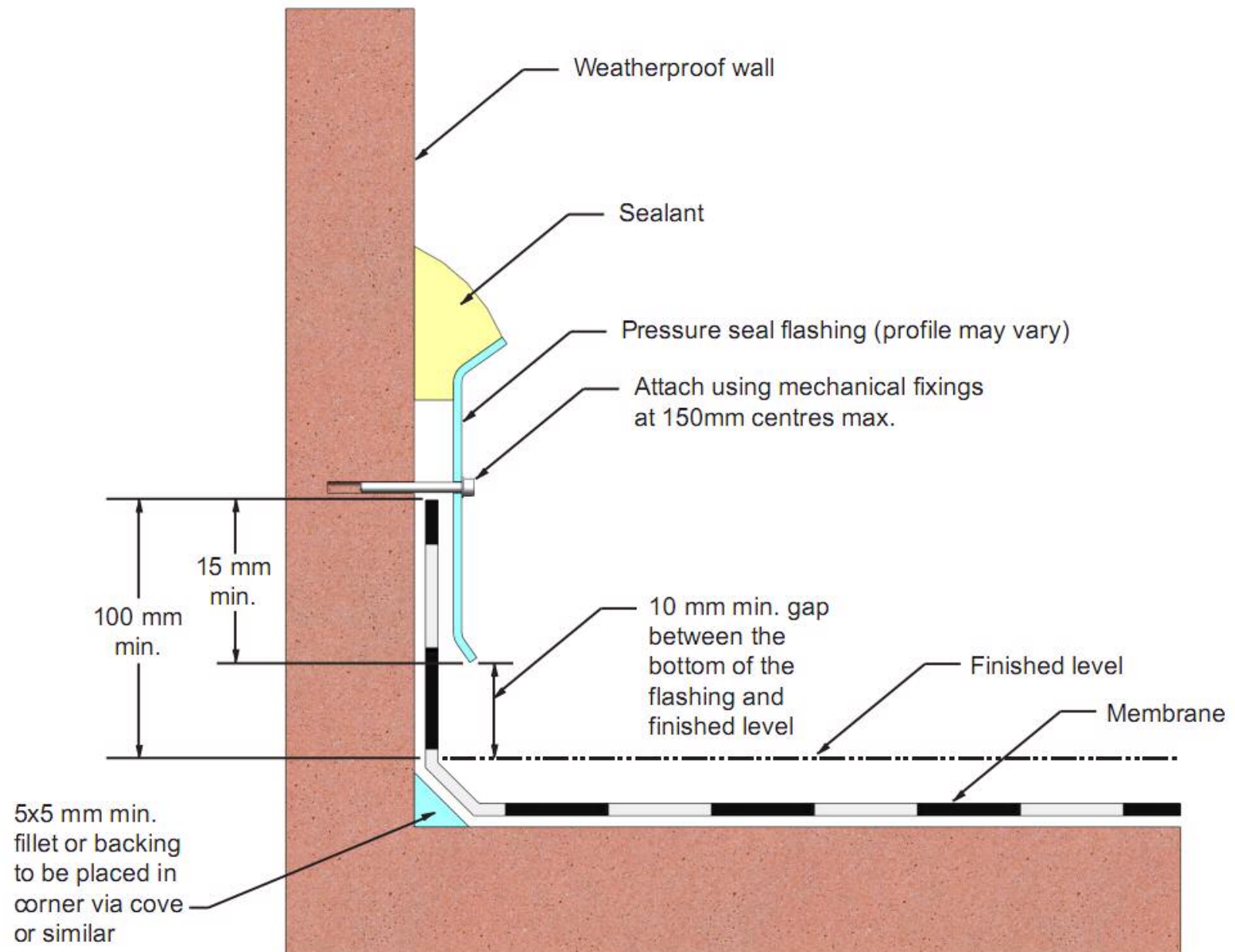
Drainage detail for exposed membrane



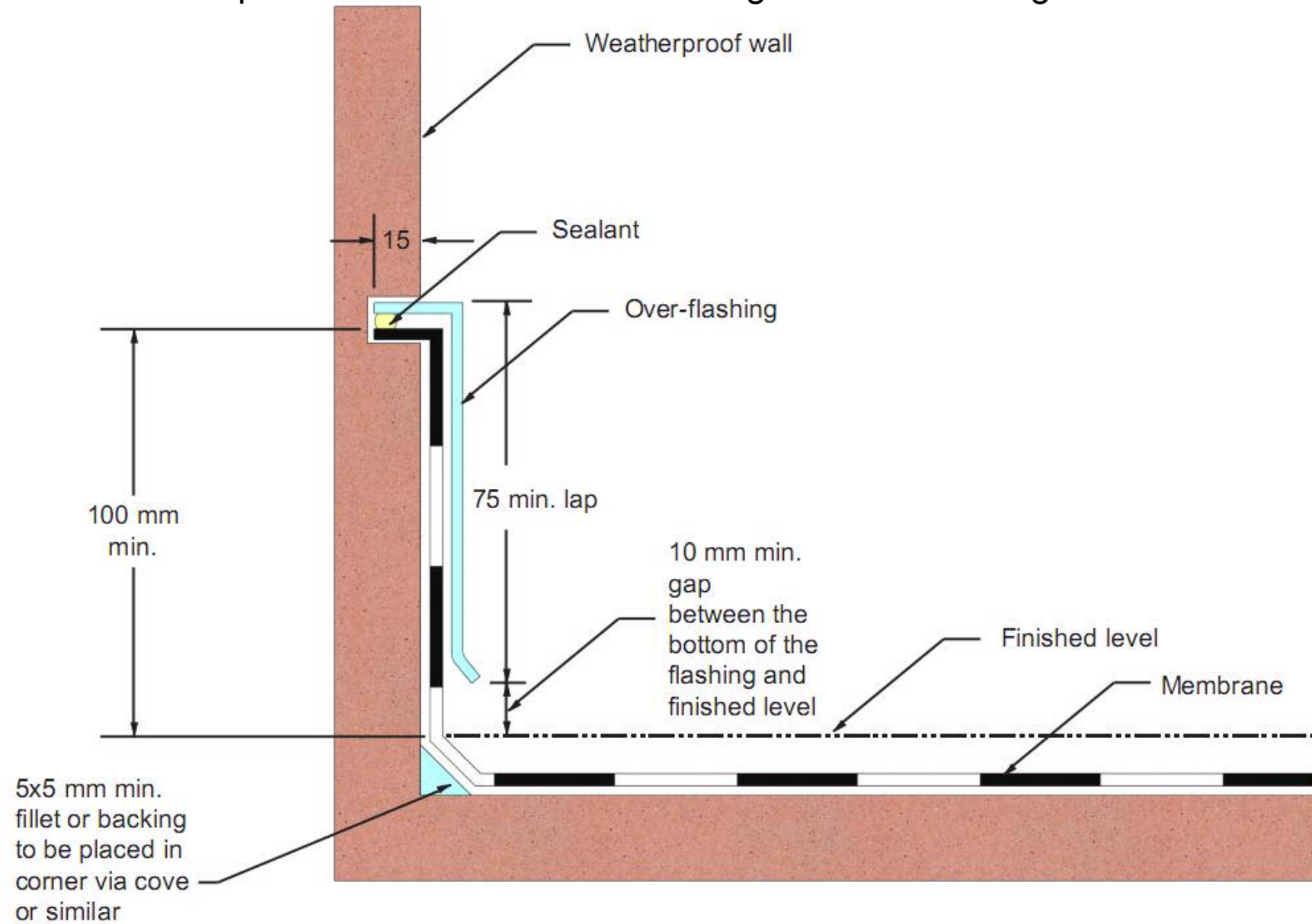
Detail of overflow pipe through parapet



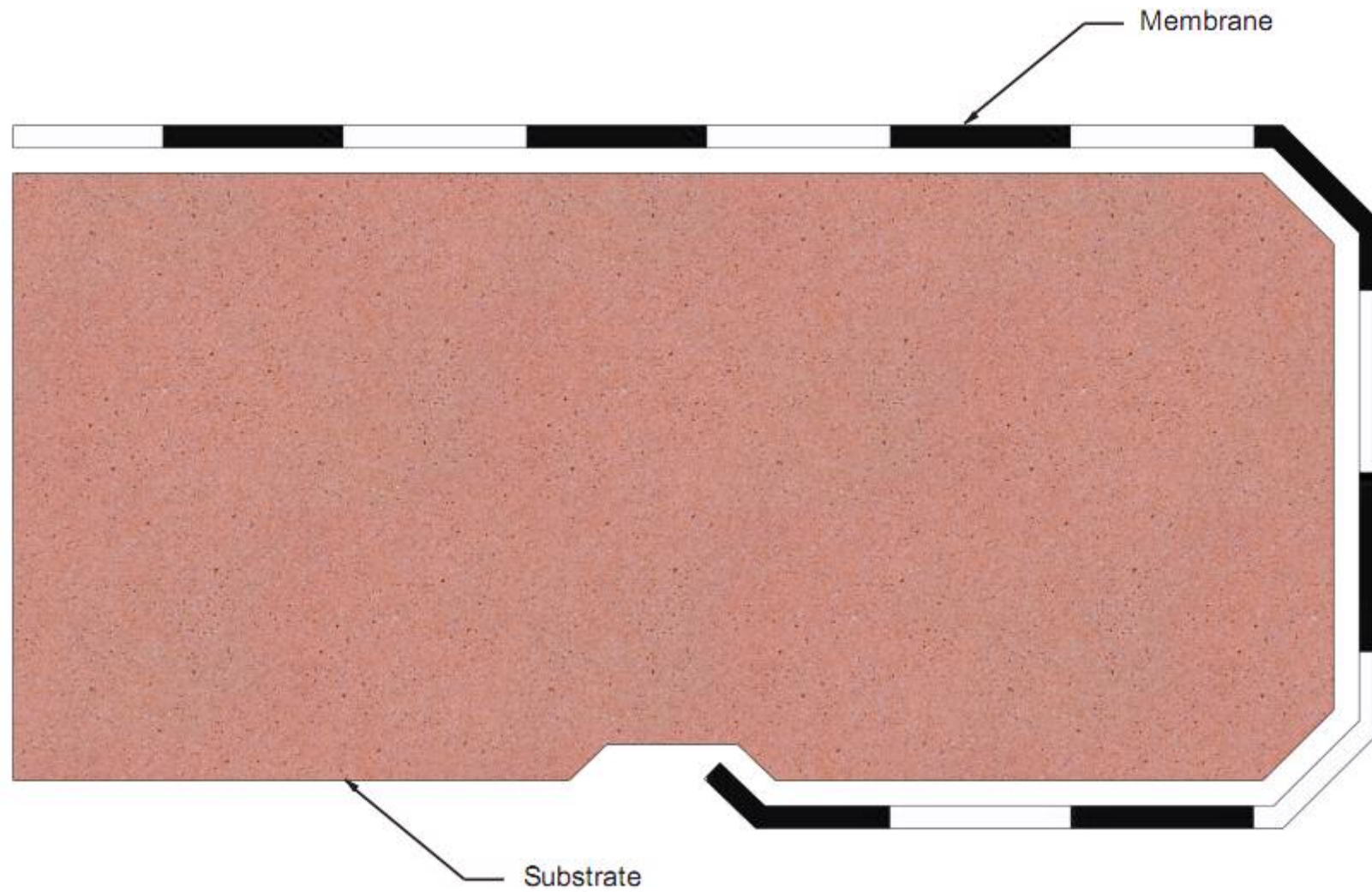
Vertical upward termination – overflashing profile



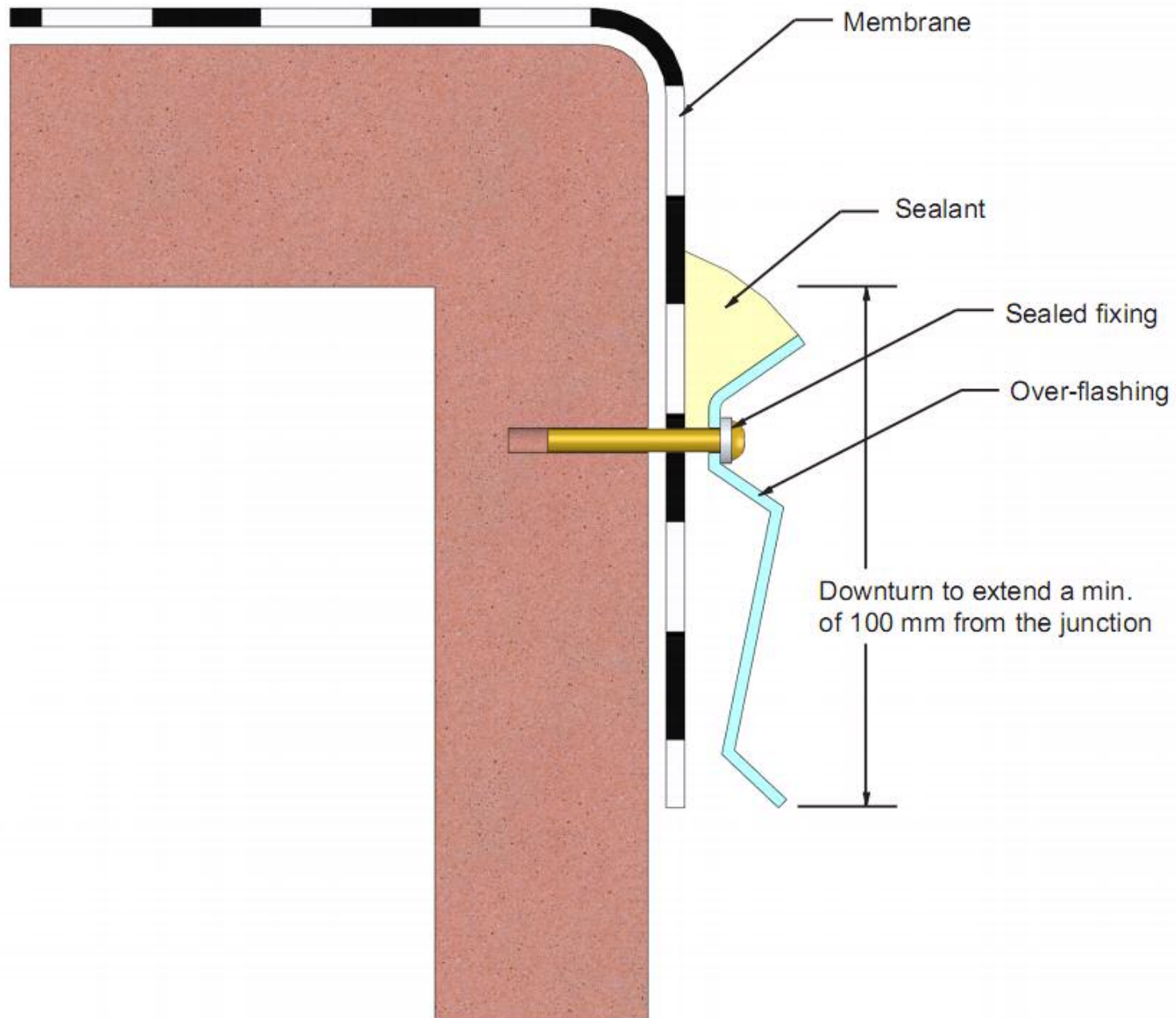
Vertical upward termination – overflashing terminated in reglet and sealed



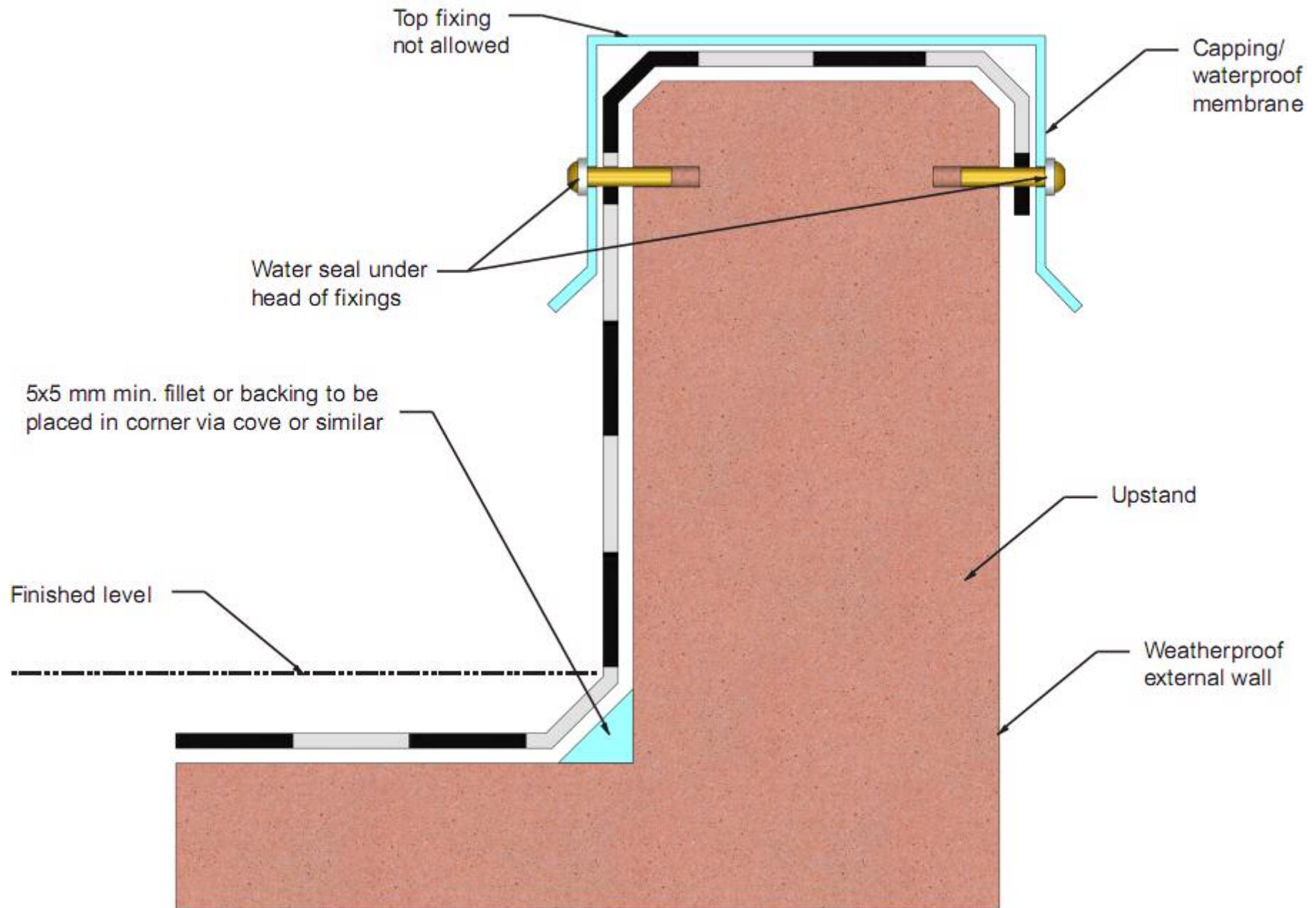
Vertical downward termination – balcony edge detail



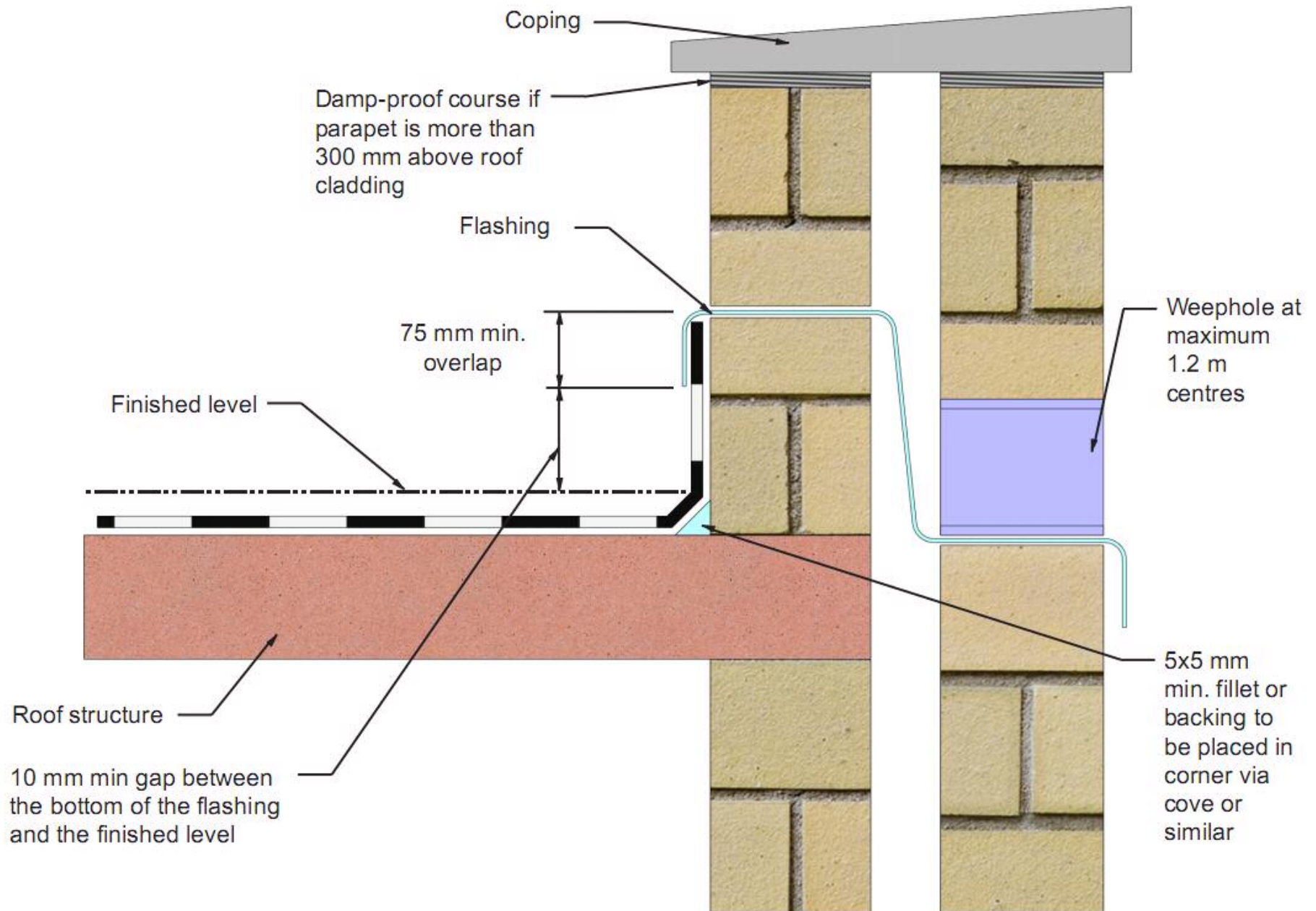
Vertical downward termination – pressure seal



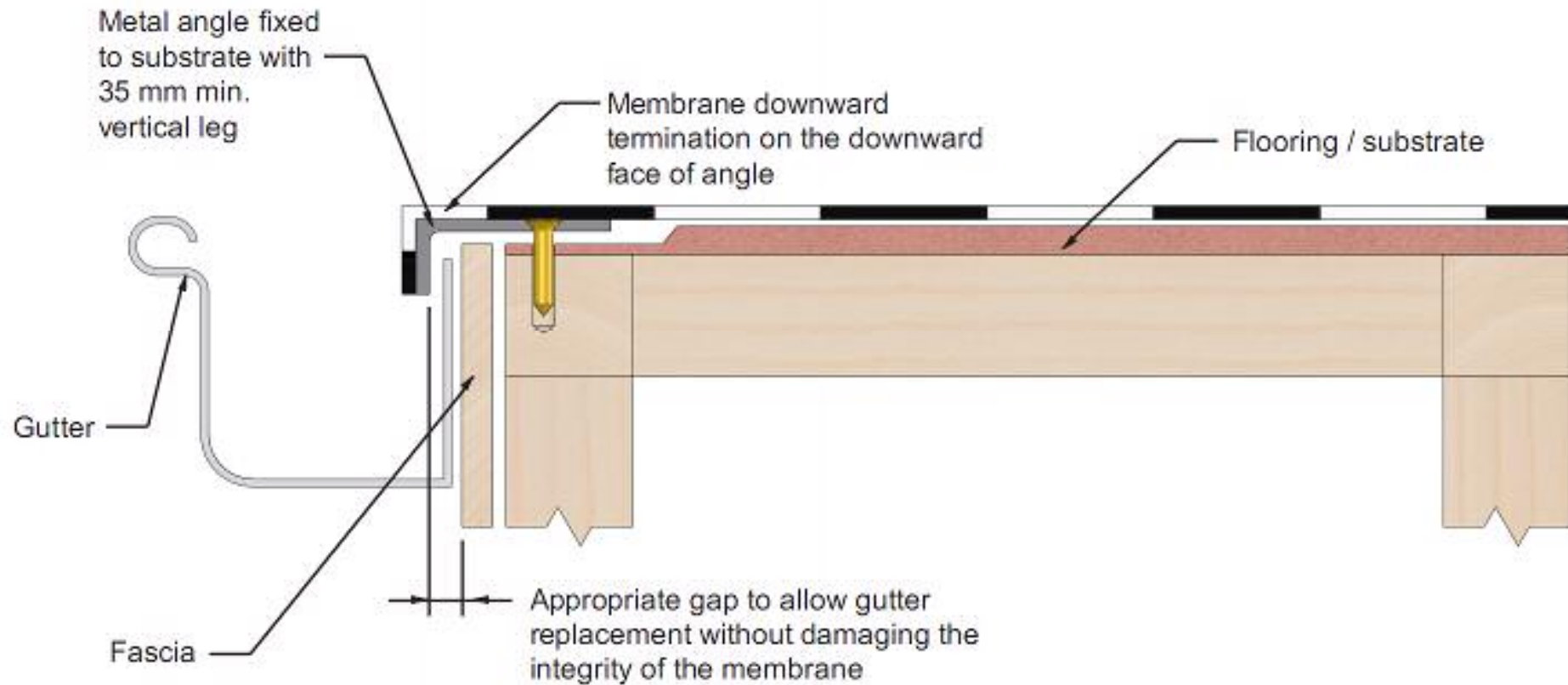
Edge protection of sheet membrane over parapet



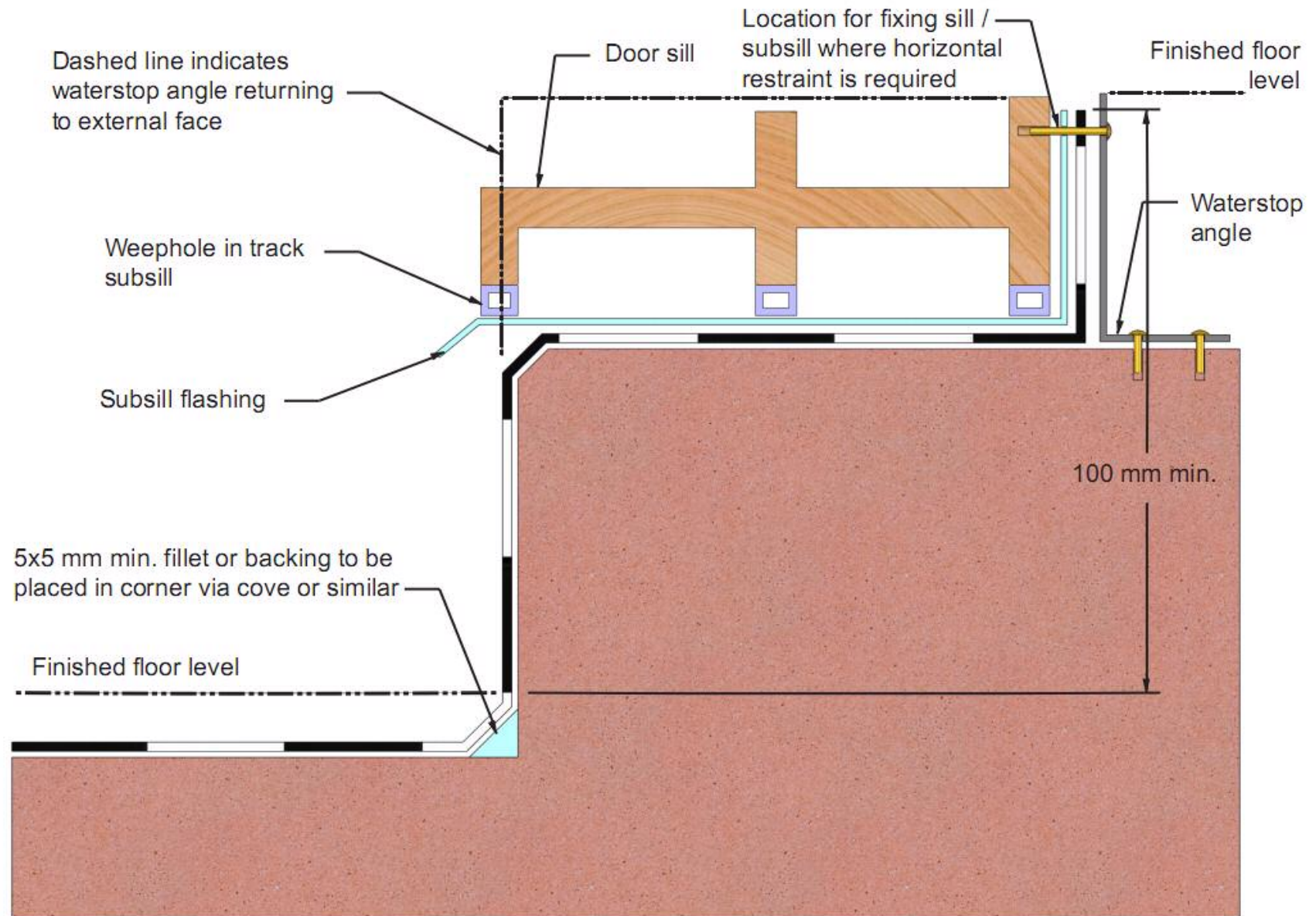
Membrane termination at a cavity parapet



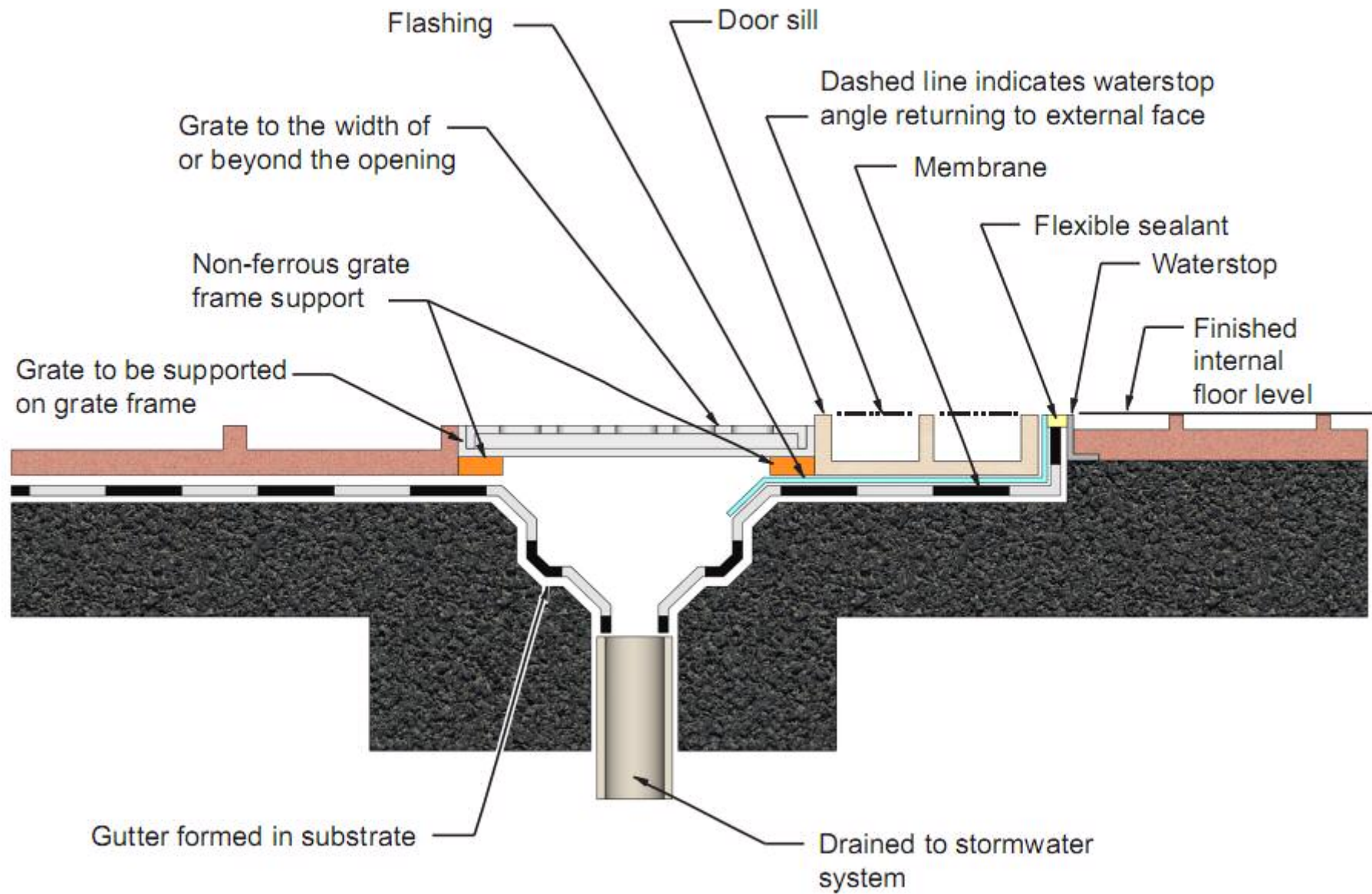
Gutter termination detail



Membrane termination at external opening doors



Membrane termination at wall openings



Vertical penetration detail using collar

